

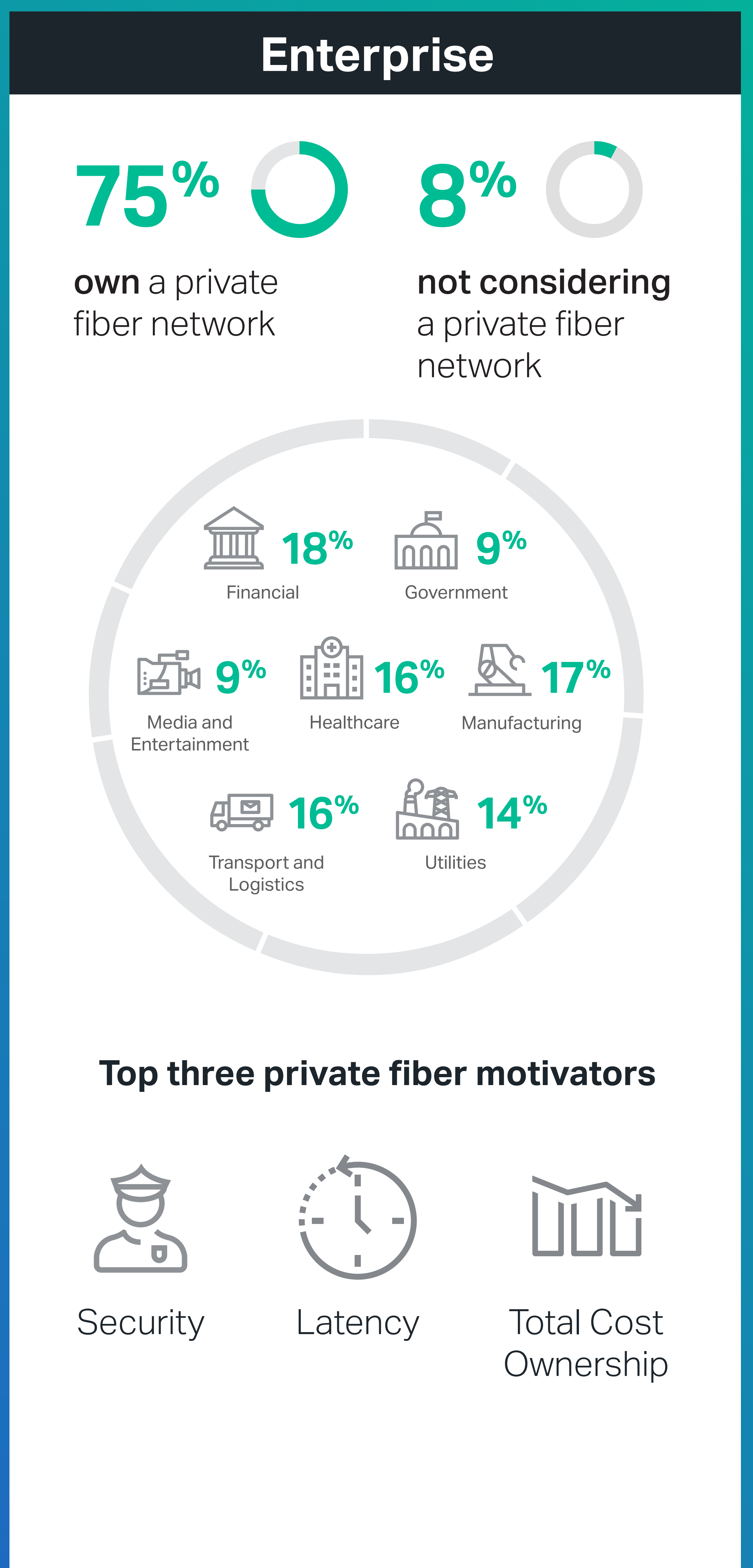
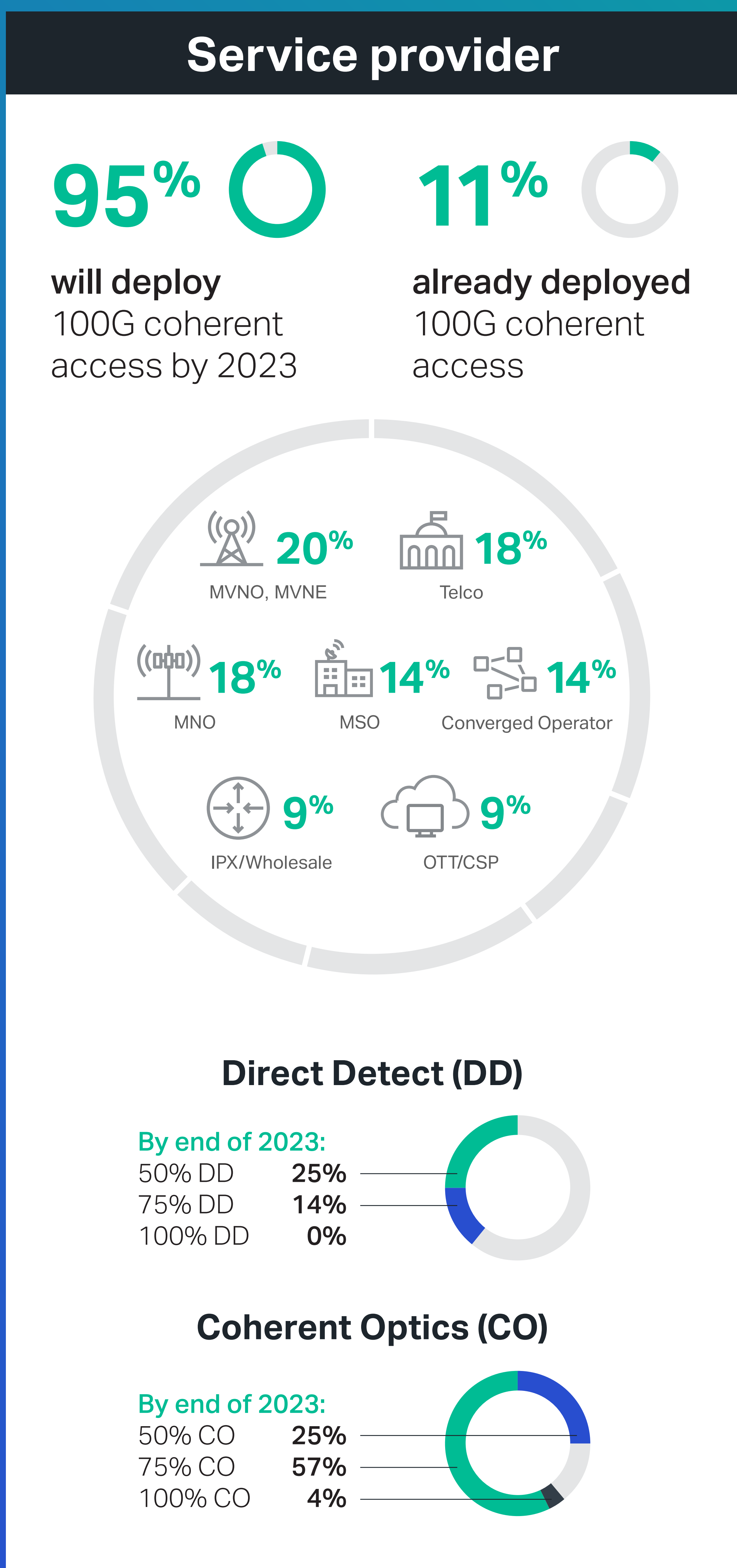
100G Everywhere in the Access

For service providers and enterprises around the globe

Broadband, 5G, and cloud continue to drive fixed fiber network access bandwidth demands. Larger enterprises and service providers are rapidly adopting 100G—driving 400G in aggregation and metro-core.



Survey results from both service providers and enterprises reveal the most significant driver for 100G access will be from 5G and enterprises utilizing cloud and other services



Scale to 100G and deliver secure high-capacity cloud connections with FlexE efficiencies, low latency, and privacy

Prepare for a new age in coherent access with Ciena's 5132

- 360 Gb/s of switching capacity in a compact device
- Features low-footprint 1RU packaging with:
 - 2 x 100GbE QSFP28 ports
 - 2 x 100GbE QSFP-DD ports
- Service isolation using FlexE
- Carrier Ethernet, IP routing, SR-MPLS, and SRv6-ready

